

# April 2024 Vqc Care

WEEK 1



## Monday 15th April Picnic Day Belair National Park

**Fee: \$85**

**Arrive by: 9:15am**

**Returning: 3:30pm**

Join us for a picnic lunch as we spend the day exploring and enjoying the scenic surroundings of the Belair National Park.



Children will be able to play on the adventure playground, explore the trails, have a hit of tennis and shoot some hoops.

BBQ Snags and picnic supplied for lunch.

**Ratio 1:8**

**Please bring  
Recess & Red hat**

Tuesday 16th April

## Spy Day

**Fee: \$60**

Ever fancied yourself as a spy? or maybe a Detective?



Drab your magnifying glass and help us solve the mysteries of OSHC  
Whose fingerprints will we find at the scene of the crime

**Ratio 1:15**

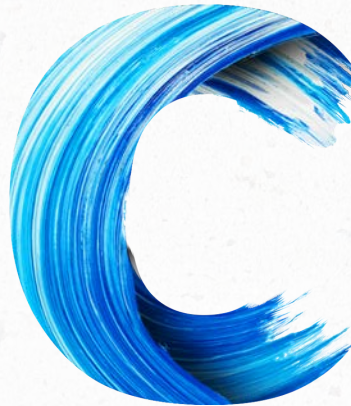
**Please bring  
Recess, Lunch & Red Hat**

Wednesday 17th April

## Letter 'C' Day

**Fee: \$60**

Today is all about the letter



Colours  
Chocolate  
Cubby building  
Collage  
Candles  
Clay  
Cricket



**Ratio 1:15**

**Please bring  
Recess, Lunch  
& Red Hat**

Thursday 18th April

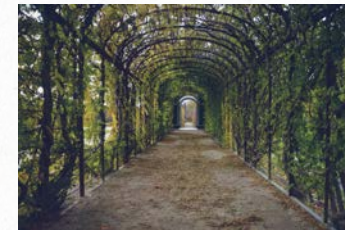
## Amazing Race

**Fee: \$85**

**Arrive by: 9:00am**

**Returning: 3:30pm**

Join us as we race around the Adelaide Botanical Gardens, looking for clues, and participating in challenges.  
Each team will wear bandanas and face paint



- NO spending money



**Ratio 1:8**

**Please bring  
Recess, Lunch & Red Hat**

Friday 19th April

## Free Friday

**Fee: \$60**

Our educators have taken their thinking caps off and thrown them over to you...

Do you have a favourite recipe you would like to make?

Or a game you would like to play?

A craft activity?

A favourite activity from home or previous holidays?

The choice is yours, YOU are in charge of planning..



You can make your suggestions via the booking form

**Ratio 1:15**

**Please bring  
Recess, Lunch & Red hat**



# April 2024 VAC Care WEEK 2

Monday 22nd April

## Hands On Day

Fee: \$60



Get ready to roll up your sleeves, warm up those hands, and stretch those fingers! Today is all about unleashing our creativity through making, building, designing, and creating with our own two hands.

Bake your own ANZAC Biscuits to take home and share with your family



Ratio 1:15

Please bring  
Red Hat, Recess & Lunch

Tuesday 23rd April

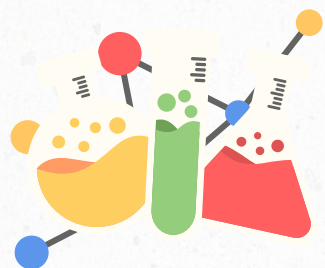
## The Science Collective

Arrive by: 9:00am

Returning: 3:00pm

Fee: \$85

We are heading to Blackwood Rec Centre to watch The Science Collective perform some great science experiments in and participate in the hands on science sessions.



Lunch at Wittunga Nature Playground

Ratio 1:15

Please bring  
Red hat, Recess & Lunch

Wednesday 24th April

## Event Cinemas Kung Fu Panda 4

Fee: \$85

Arrive by: 9:30am

Returning: 3:00pm

Join us as we head down the hill to Marion Cinemas to watch



On the way home we will be stopping off at Mitchell Park Community Centre playground for some lunch and play.

-Candy Bar will not be available on the day.  
Pre-order only via the booking & consent form.  
Candy bar orders close

19/4/24  
Ratio 1:10

Please bring  
Red hat, Recess & Lunch

Thursday 25th April

## ANZAC Day No VAC Care



Friday 26th April

## Bike & Blade Day

Fee: \$60

Zoom into the weekend and join us for bike and blade day. Bring along your own set of wheels whether this be a bike, scooter, skateboard or rollerblades.

Race around the obstacle course and race track or simply participate in free riding at the courts.

No Helmet = No Riding



Ratio 1:15

Please bring  
Red hat, Recess & Lunch

## Bookings

Please complete and submit the consent & booking form online, then request your required sessions on the Xplor app. Once we have received the consent form all booking requests will be processed. You will be able to view your confirmed bookings on the app, select calendar and all booked in days will have an orange dot applied to them.

Any last minute bookings during vacation care, please contact OSHC via email or text to confirm availability, prior to completing consent form.

# [CLICK HERE FOR VACATION CARE CONSENT FORM](#)

## Cancellations

- Cancellations after 7:00am on the 2/4/2024 will be processed as an absence and charged.
- Vacation Care fees that have already been paid will be credited to your account for future Vacation Care or OSHC invoices.

## SunSmart

Please ensure your children are wearing SunSmart clothing,  
No singlet tops  
Rashies for water/swimming days

## Excursion Day

- Spending money only if stated on program
- Please ensure your child is wearing appropriate shoes for the day

Children must have a RED hat **NO RED HAT?**

We will allocate them one and your account will be charged \$6 for the cost of that, or please approach a staff member.

Please see Kylie if you have any queries.

Zooper Doopers are available for purchase during Vacation Care

# CRAIGBURN VACATION CARE

## PARENT INFORMATION

### PLEASE READ

For more detailed information, please ask a staff member for a parent handbook.

The information provided below is in addition to the handbook provided during the initial enrolment process.

Director: Kylie Preece

Phone Numbers: 8270 1620 or 0427 271 768

Email: [cps.oshc820@schools.sa.edu.au](mailto:cps.oshc820@schools.sa.edu.au)

Opening Hours: 7.00am – 6:15pm

Late collection will incur a surcharge. If you are going to be late, please call and let us know.

If a child is not collected 30 minutes after closing time and we have not been able to contact parents, Crisis Care will be contacted.

### FEES AND PAYMENT:

**School Based Day: \$60 - Excursion Day: \$85**

Families will be invoiced on a Tuesday for the week prior and have 14 days to pay. Any outstanding fees after this date will be recovered as per Bill Payment Policy outlined in Family Handbook

### BOOKINGS:

Our Vacation Care program is licensed for 90 children per day. However, some of our excursions have limited availability because of the venue or our staffing capacity.

We operate on a first in, first served basis, so book early to avoid disappointment.

Please complete and submit the consent & booking form online, then request your required sessions on the Xplor app.

Once we have received the consent form all booking requests will be processed. You will be able to view your confirmed bookings on the app, select calendar and all booked in days will have an orange dot applied to them.

Any last minute bookings during vacation care, please contact OSHC via email or text to confirm availability, prior to completing consent form.

If we are fully booked your child/ren will be placed on a waitlist in order of request. You will be contacted via text or call if a space becomes available.

### Cancellations: (Please read carefully)

Cancellations via email only - you will be charged in full for any cancellations after 7:00am, Tuesday 2/4/23 and during Vacation Care.

Vacation Care fees that have already been paid will be credited to your account for future Vacation Care or OSHC invoices.

In the case of illness, a medical certificate will be required for a credit of half fees paid. (Only for the Child that Medical certificate is issued to)

Otherwise, the cancellation will be charged as an allowable absence and each child is entitled to 42 allowable absences each year, which receive CCS entitlements (if applicable).

### EXCURSIONS

In accordance with the Education and Care Services National Regulations 2011, we are required to notify parents of the staff/child ratios for excursions. This has been detailed on the program information & the Consent & Booking Form. These have been calculated following a risk assessment for each excursion, which is available for parents to read. Please ask Kylie if you would like to see the risk assessment.

# CRAIGBURN VACATION CARE

## PARENT INFORMATION

### PLEASE READ

#### FOOD & NUTRITION:

Craigburn OSHC aims to provide a healthy and nutritious afternoon tea. A snack for morning tea & lunch is required on most days, unless otherwise stated in the program. On excursion days, unless otherwise stated, there will be no opportunity for children to buy lunch. If children bring money for lunch on these days, the OSHC staff will prepare a sandwich and fruit lunch at a charge. Please notify staff of any allergies or special dietary needs, and they will be catered for. Please be aware that some children who attend Vacation Care have a serious nut allergy, so please do not send your child with any form of nuts or nut spread in sandwiches.

#### ILLNESS AND MEDICATION:

To prevent illness from spreading, children who are ill will not be able to attend the program. This is to ensure illness is kept to a minimum and your child's continued enjoyment in the program. If your child becomes ill during the day, you will be notified, and the child will be removed from activities until they can be picked up. Please ensure that medications are given to children outside of their attendance at Vacation Care. A medication authority form, signed by a doctor will be required for medication in the prescribed bottle, with pharmacy label containing the child's name and dosage. Staff are unable to administer non-prescribed medication to children during Vacation Care.

If you have previously notified us of medication use via the OSHC enrolment form and Action plan, we will collect that medication from the school for the duration of Vacation care. The medication will then be returned to the school at the beginning of the term.

#### Additional Needs:

Children with additional needs will be catered for whilst in Craigburn Vacation Care. Please give the staff as much information as possible to ensure that we have all the information necessary to ensure that all children remain safe and have an enjoyable time. Please discuss any additional special needs with Kylie.

#### Clothing:

Remember your child will be playing all day. It is important that they are suitably dressed i.e. closed in shoes, clothes that are easy to move around in, shirts that cover shoulders, clothes that can take some paint etc.

A RED OSHC Sun Smart hat must be provided from September to June and is available for purchase from OSHC.

No Red Hat No Play. If children have no red hat on excursion days, they will be allocated a hat and your account will be charged.

#### Behaviour Management Policy:

The Craigburn OSHC behaviour guidelines are clearly displayed on the notice board by the sign in/out desk. Our expectations are regularly discussed with the children and it is a condition of entry that all children abide with these expectations. Failure to do so may result in removal from the program.

#### Fire Ban Procedure

Under DECD's policy Craigburn Primary School will be CLOSED on days when Catastrophic (Code RED) bushfire weather conditions are forecast in the Mount Lofty Ranges Fire Ban District. This closure also applies to the OSHC & Vacation Care Services.

During Vacation Care, once staff have been informed by DECD that the school will be closed due to a catastrophic forecast for the Mount Lofty Ranges, staff will contact all parents whose children are booked in for that day. Parents will need to make alternative arrangements for their children. Any fees paid in advance will be reimbursed or credited to the account.

If the alert is issued over a weekend for a Monday, it will be the responsibility of parents to listen to warnings and the fire category for the Mount Lofty Ranges District. If it is declared Catastrophic (Code red) for this district on the Monday, the service will be closed.

If the bushfire starts on a day that the service is open, the school's bushfire evacuation procedure will be followed. If a fire starts in the region whilst Vacation Care is on an excursion and it is unsafe to return to school, the staff will choose a safe place to take the children and parents will be phoned. Parents must ensure that they provide current contact numbers each Vacation Care, including emergency contacts for when parents cannot be contacted